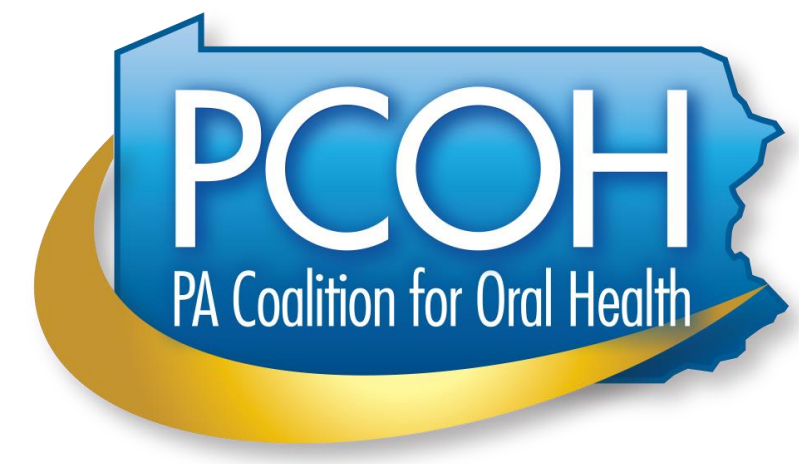


How Healthy is Your County: A Data System for Tracking Oral Health in Pennsylvania

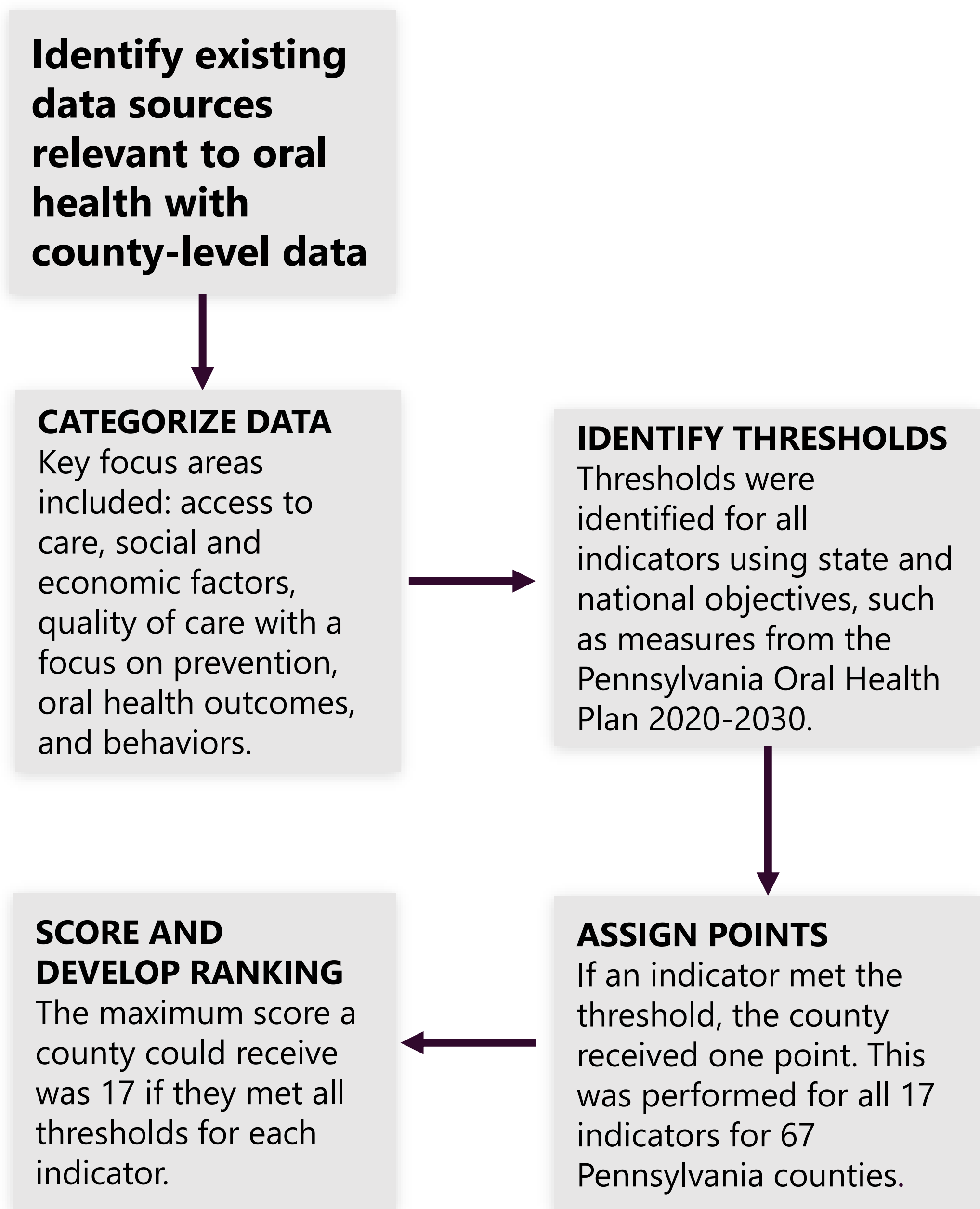


Helen Hawkey, BSDH
Pennsylvania Coalition for Oral Health
paoralhealth.org | info@paoralhealth.org

Background

Public health data collected by federal and state programs exists on many different websites and databases making it difficult for county and local users to compare such data. To consolidate county-level oral health data and enable comparisons in an easily understandable format, a ranking system was designed.

Methods

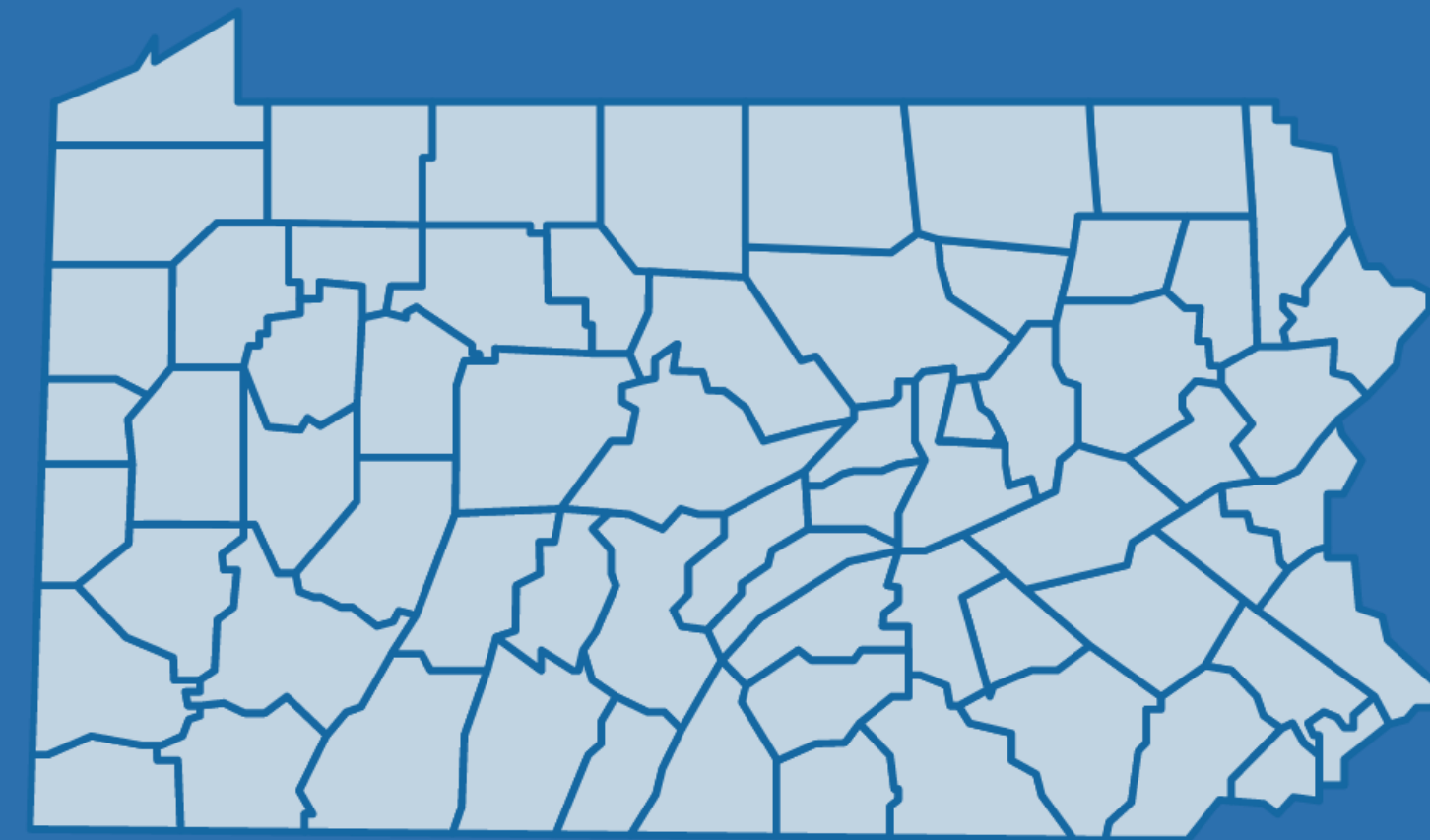


Additional Results

- Most counties met less than half of the thresholds.
- The average score across all 67 counties was 5.
- At least all thresholds were met by at least one county, except for adult smoking, for which no county met the threshold.

Acknowledgments

Thank you to Alison Feise (Public Health Associate Program, National Center for STLT Public Health Infrastructure and Workforce, Centers for Disease Control and Prevention assigned to the PA Coalition for Oral Health) and Danilo Vujovic (public health student at Mercyhurst University) for their contributions to this project.

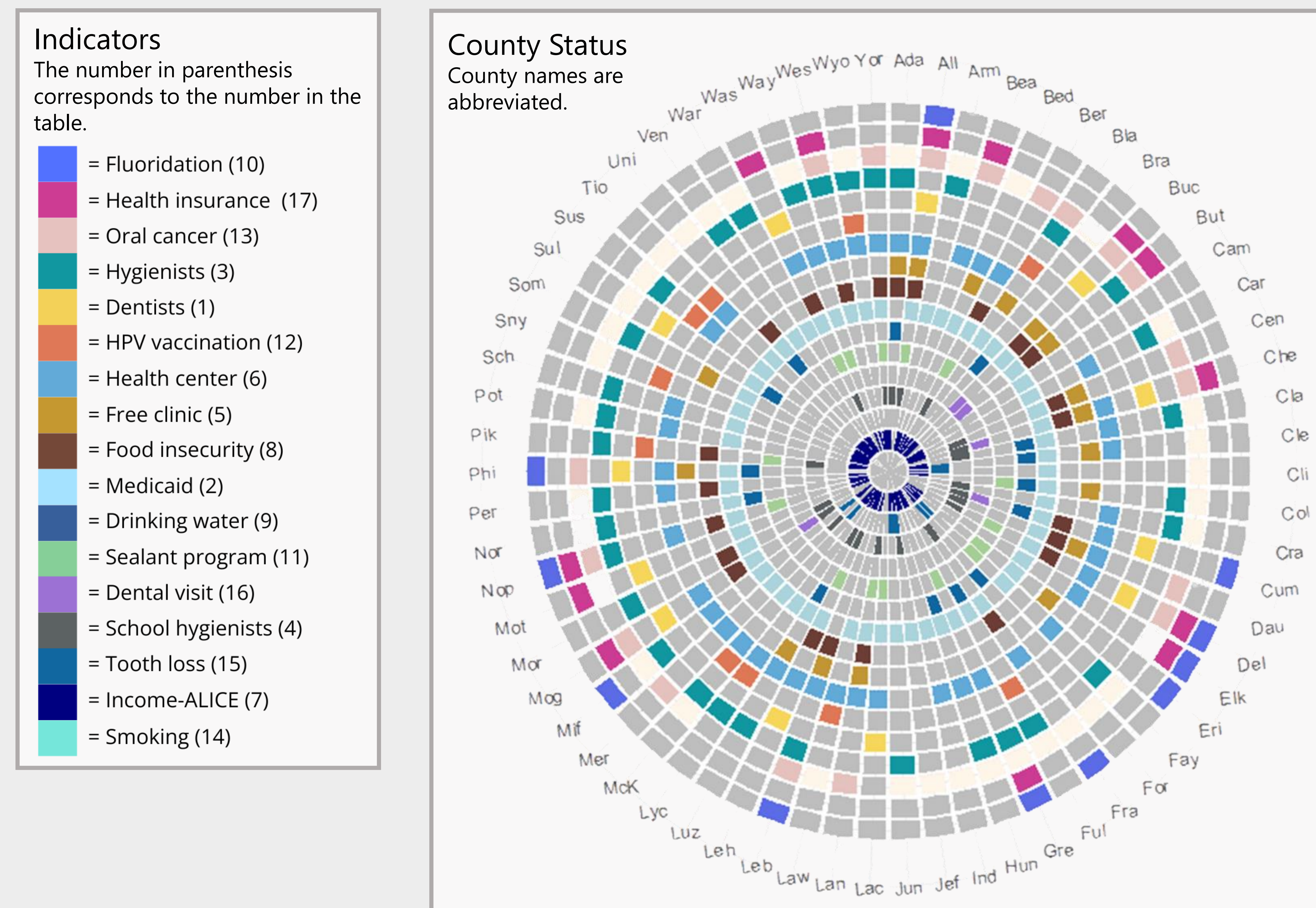


A county ranking system can easily be created for oral health to improve the use of data at the local level.

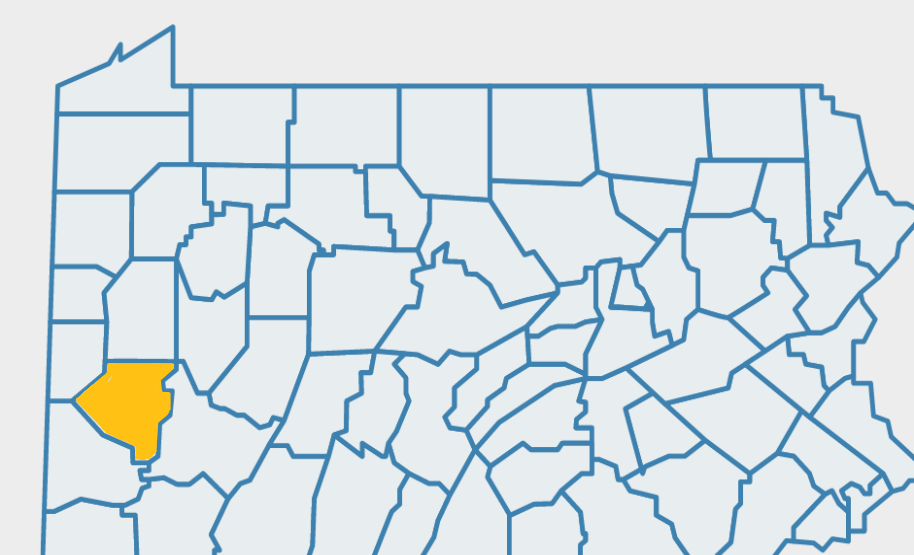


Results: County Comparisons

All 67 Pennsylvania counties are represented in the circle chart. Each county is represented by a slice in the circle, and each indicator is a rectangle. If a box is filled in, the county met or exceeded the threshold set for the indicator. For grey boxes, the threshold was not met, and for a white box, there is no data.



Results: Example for Allegheny County "All"



- #1 ranked overall – 10 points (10 of 17 thresholds were met).
- One of 11 counties in Pennsylvania to meet the threshold for water fluoridation.
- One of only a few counties in the region that does not meet the threshold for the number of hygienists but does so for dentists.

Indicators and Thresholds

No.	Measure name	Threshold*	Data source
Access to Care – Providers			
1	Dentists	At least 60 per 100,000 (ADA)	PA DOS
2	Dentists-Medicaid	1 dentist per 5,000 enrollees	PA DOS
3	Hygienists	Above 1.5 to 1 RDH to DDS ratio	PA DHS
4	Certified School Dental Hygienists	Presence of 1	PCOH
Access to Care – Clinics/Health Centers			
5	Free clinics	Presence of 1 with dental	PCOH
6	Health center	Presence of 1 with dental	PACHC
Social and Economic Factors			
7	Income-ALICE	Below 27%, state average	United for ALICE
8	Food insecurity	Less than 11%, state average	Map the Meal Gap
Quality of Care – Preventive			
9	Safe drinking water	No water violations	SDWIS
10	Water fluoridation status	Above 77.1% (HP2030)	PA DOH
11	DOH school sealant program	Presence of 1	PA DOH/PCOH
12	HPV vaccination	Above 80.0% (HP2030)	PA DOH
Outcomes and Behaviors			
13	Oral cancer	Less than 12.7 incidence per 100,000 (Plan)	PA Cancer Registry
14	Adult smoking	Less than 6.1% (HP2030)	BRFSS
15	All tooth loss (adults 65+)	Above 14.8%, state average	CDC PLACES
16	Adult dental visit	Above 68%, state average	CDC PLACES
17	Health insurance	Above 92.4% (HP2030)	Small Area Health Insurance Estimates

*Thresholds were set using state or national guidelines when available. If unspecified, the threshold is a Pennsylvania Coalition for Oral Health (PCOH) recommendation.